



# The Analyst

Volume 6, Issue 2

December 2015

## 2nd International Symposium Delivers

### Two Days of Fellowship and Philatelic Research in Chicagoland

Sixty-five delegates met at the Westin Hotel in Itasca, Illinois on the 18th and 19th of November to share and discuss their research projects in a relaxed and collegial atmosphere. Each of the sixteen technical presentations aroused discussions that flowed easily into post-presentation conversation. New contacts were made and old ones renewed.

Thanks to Jim Allen, Technical Program Chairman, interest levels were enhanced by staggering the subject areas rather than grouping them into sub-disciplines. In a few cases the ample time for questions led to possible new research projects.

Bob Odenweller opened the proceedings by summarizing the history of technical research in philately, spanning the time from Watson's 1912 philatelic microscope to Bob's own 2011 use of beta rays to detect watermarks. Jonas Hällström wrapped up the two-day event with a revealing and somewhat encouraging discussion about the extent to which modern analytical techniques are being used in Europe to



Bob Odenweller presents an historical review of technical research in philately.

document a flurry of restored covers which have turned up on the market. Presentation quality was high, and covered a broad range of analytical subjects, from basic studies that create practical methods for us to examine and identify our philatelic treasures, to applied research showing how those methods have been applied to solve philatelic problems.

The hotel delivered as well, with a comfortable meeting space, excellent audiovisual equipment, boxed lunches, and a relaxed atmosphere for pre- and post-meeting conversation and dining.

The symposium's ambiance

of *We are all students here* was reflected by the complete absence of *Hey, look at me* questions sometimes heard at professional gatherings in the hard sciences.

Participants responded warmly with comments such as "This is the best meeting I have ever been to" (Ted Liston) to "You hit a hundred percent on this" (Rich Drews). As expressed by Ken Nilsestuen, "The lesson I learned is that our science is still showing us more about what we don't know than providing definitive answers. That's a great lesson!"

Representative illustrations are included here. Full abstracts can be found on the IAP website:

[www.analyticalphilately.org](http://www.analyticalphilately.org).

All PowerPoint presentations will be posted on the IAP website by February 1. A proceedings volume will be published by the Smithsonian Scholarly Press in 2016, as was done for the 2012 symposium.

A highlight of the meeting was a sumptuous dinner for the first 38 registrants, hosted by the Collectors Club of Chicago at their clubhouse.

Guests toured the beautiful brownstone townhouse, built in 1878 and donated to the club in the 1967 by member Richard Cabeen. At more than 30,000 volumes, the CCC philatelic library is the Midwest's largest.

We extend heartfelt thanks to Chuck Cwiakala, CCC President, who organized the evening, and to Jackie Alton, CCC Secretary, who created the menu.

Thanks also go to our gracious hosts for the evening: Chuck, Teresa and Tanya Cwiakala, Jackie Alton, Rich and Bonnie Drews, Al Kugel, Jim and Jean Mazepa, Jerry Miller, and Melanie Rogers.

The Symposium's registration was 30% higher than at the First International Symposium in Washington in 2012. Broad interest was expressed in the next symposium, which is in the planning stages for 2017 in London.

The IAP Board of Directors would like to thank all participants for making this event a success.

Apply for a grant and present your results at the symposium in London!

## 2015 IAP Symposium: Selected Research Results

Odenweller, Robert  
A Retrospective of Technical Research in Philately

### 2011 Beta ray examination



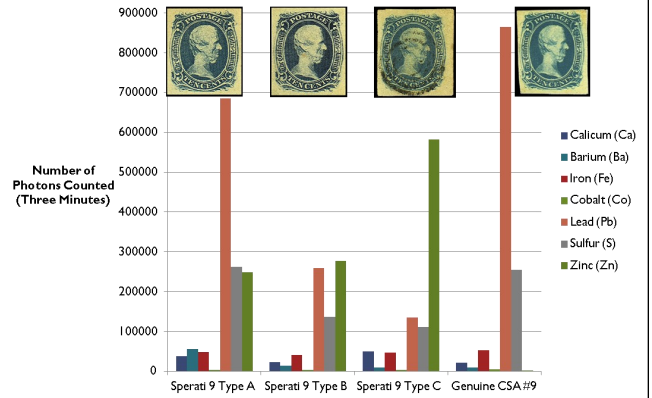
Portion of a cover and stamp, normal and beta ray image showing watermark



Beta ray apparatus at the Morgan Library, New York

Lera, Thomas:  
The Use of X-Ray Fluorescence in Detecting Philatelic Forgeries

### Selected Elements for Sperati vs CSA # 9



DeBlois, Diane and Harris, Robert Dalton  
Modeling Postal History with Postal Numbers

Thick black = daily 4 horse postcoach  
Thin black = daily not 4 horse postcoach  
Thick green = 3x week 4 horse postcoach  
Thin green = 3x week not 4 horse postcoach  
Thick red = 2x week  
Thin red = Once a week

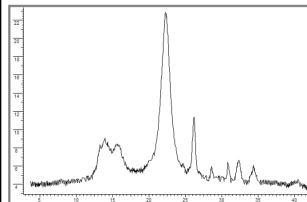


Early postal Routes around Utica, New York

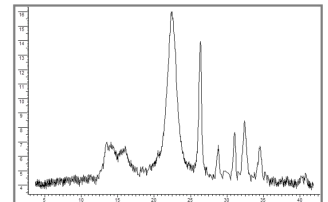
Eubanks, Gordon and Brittain, Harry  
Using XRD and IR-ATR to Determine Pigment Composition of the United States 5 cent 1847 Issue



### Compare 2 Stamps. XRD Positions L2 & R1



Orange stamp



Brown Black stamp

Katz, Farley P.  
Microscopic Analysis of Paper Content of the "Rosette Eagles":  
Mystery Mexican Stamps - Confirms Origin and Date

### Rosette & Fraudulent Reprint



Hällström, Jonas  
Fakes, Forgeries & Experts Journal (FFE):  
A "Statement of Purpose" and "Responsibility"



Before the restoration

After the restoration



## 2015 IAP Symposium: Selected Research Results

Cibulskis, John M.  
Towards a Stamp-Oriented Color Guide:  
Objectifying Classification by Color

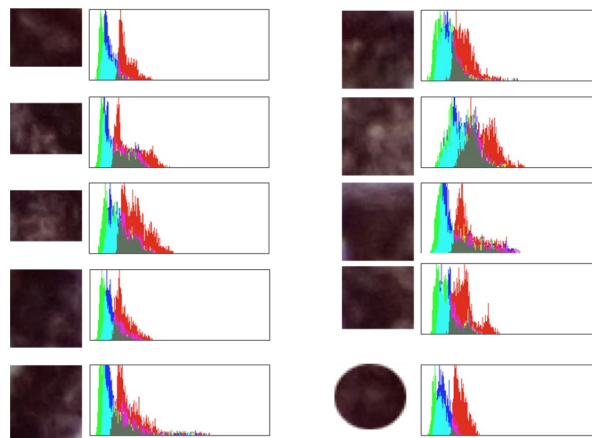
### DeltaE76 Distance



- Their DeltaE76 Distance is 3.75 which is Larger than the JND
- Stamp 1 was dealer signed as type a and stamp 6 was dealer signed as type b

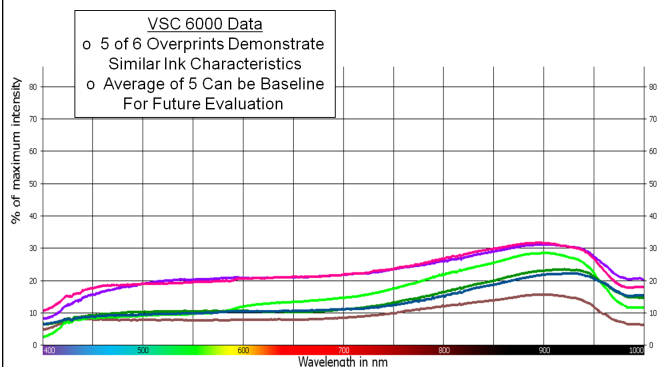
Lyerla, Tim  
Shade Verification Using Tonal Histogram Analyses

An Array of Tonal Histograms Selected from Various Regions of the Same Stamp

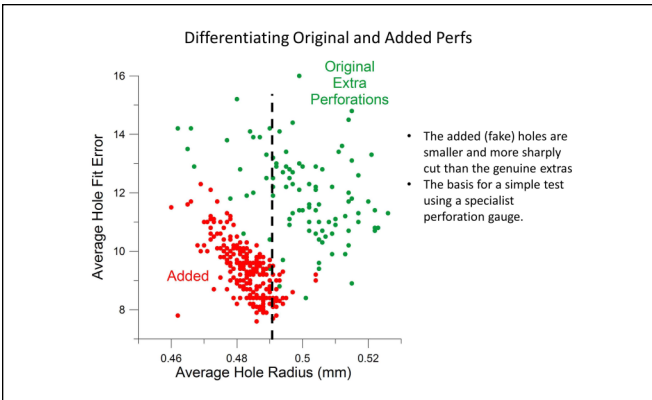


Youseffi, K. Joe  
Application of Advanced Analytic Tools to Persian Philately

### L1 - Ink characteristics of "yek-sad-adad" manual overprint



Mustacich, Robert  
Computerized Image Analysis Applied to Fingerprinting Stamp Perforations



## Jonas Hällström Joins IAP Board



Jonas Hällström

We are pleased to say that that Jonas Hällström has accepted our invitation to join IAP's Board of Directors. Jonas is the editor of FFE (*Fakes, Forgeries and Experts*), which works closely with the International Association of Philatelic Experts to inform collectors and exhibitors about faked and forged items. If you have never read FFE, you have

been missing an important opportunity to educate yourself.

Jonas brings new strength to IAP as a collector, and as a writer and researcher connected to those doing analytical philately outside the United States and Canada.

His help with organizing the Third International Symposium in London will be invaluable. **Welcome Jonas!**

## Authors' Note

The deadline is 31 March 2016 for inclusion of your full-length paper in the proceedings volume to be published by the Smithsonian Scholarly Press.

This is a "drop-dead" date; anything received after that day be published as an abstract only, with one figure.

For more information, please contact Tom Lera:

LeraT@si.edu



Institute for Analytical Philately, Inc.  
PMB 31, 1668 Merriman Road  
Akron, OH 44313

## 2016 Dues Notice

Level	Annual Amount	My Payment
Patron*	\$100	\$_____.
Sponsor*	\$100	_____.
Supporting	\$100	_____.
Sustaining	\$50	_____.
Institutional	\$250	_____.
Additional donation		_____.
Total		\$ <u>_____.</u>

You may donate through PayPal ([knilsestuen@analyticalphilately.org](mailto:knilsestuen@analyticalphilately.org)) or by sending a check payable to the “Institute for Analytical Philately, Inc.” to the address above.

Your donation may be tax deductible since the Institute is a tax-exempt organization under Section 501 (c) (3) of the Internal Revenue Code. We will provide a receipt to you early next year.

Thank you again for your support.

\*Patron and Sponsor levels require \$5,000 and \$2,000 initial pledges and \$100 annual contribution.

Name \_\_\_\_\_

Street \_\_\_\_\_

City, State, Post code, Country \_\_\_\_\_

Email \_\_\_\_\_@\_\_\_\_\_

Phone number \_\_\_\_\_