

Appendix 5 Screen Images of the Analysis Programs

1. Color Analysis:

Color Analysis 3.4.1 (Test Version) : E:\Dev\StampDatabase\Images\M 37\Numbered Canon\

Image: M 37 Canon 9
 Low Cutoff: 0.3400 High Cutoff: 0.6200
 Exclude Gray Pixels Level: 35

Order	Color	R	G	B	Distance	Test Color	Stamp
1	braunpurpur	145	76	97	14		
2	violettbraun	129	91	99	23		
3	hellbraunlla	160	96	106	24		
4	hellsiena	146	89	70	29		
5	lebhaftviolettbraun	147	108	113	36		
6	hellbraun	147	117	88	38		
7	hellkaminbraun	163	79	83	39		
8	lebhaftbraunviolett	137	74	117	44		
9	braunlichlla	171	69	99	45		
10	lebhaftbraunpurpur	162	102	117	49		

Stamp Colors: Single Color Multi-Color
 R: 147 G: 88 B: 97 H: 0.9750 S: 0.2500 L: 0.4643

Color Language: English German
 Color Match Distance: RGB (Taxi) HSL Euclid

Copyright John M. Czubakis 2006-2014

Color Analysis 3.4.1 (Test Version) : E:\Dev\StampDatabase\Images\M 37\Numbered Canon\

Image: M 37 Canon 15
 Low Cutoff: 0.3500 High Cutoff: 0.6300
 Exclude Gray Pixels Level: 40

Compute Differences

Luminance Difference (0 to 1): 0.0523
 Pearson's R (Correlation Coefficient) (-1 to 1): 0.9325 ASUM (Abs Sum of Scaled Differences)(0 to 1): 0.8889 Euclid: 21.2132 RGB (Taxi): 36.0000
 R with Luminance: 0.8838 ASUM with Luminance: 0.8425 HSL: 46.6126 RGB2 (Max): 15.0000

Copyright John M. Czubakis 2006-2014

2. Compare and Group:

Compare and Group Version 3.2.1: E:\Dev\StampDatabase\Images\Mi 37\Numbered Canon\Mi 37 Canon 1.jpg

Setup and Run Comparisons | Form Groups | Study Groups

Image: Mi 37 Canon 1

Low Cutoff: 0.3400 High Cutoff: 0.6300

Summary Results of Comparisons:

Cutoff	# of Pairs	% of Pairs
0.99	0	0.0
0.98	0	0.0
0.97	0	0.0
0.96	2	0.4
0.95	2	0.4
0.94	5	1.0
0.93	7	1.4
0.92	16	3.2
0.91	26	5.2
0.90	42	8.5

Copyright John M. Cibulskis 2006-2014

Compare and Group Version 3.2.1: E:\Dev\StampDatabase\Images\Mi 37\Numbered Canon\Mi 37 Canon 1.jpg

Setup and Run Comparisons | Form Groups | Study Groups

Cliques

Cliques Found:

Peak	R	G	B	Size
1	157	96	104	9
2	159	116	121	4
3	165	118	121	3
4	159	120	123	2
5	142	79	93	2
6	184	140	141	2
7	168	113	122	2
8	147	98	101	2

Singletons

Singletons Found:

Peak	R	G	B	Size
1	137	105	115	1
2	164	127	137	1
3	159	86	84	1
4	163	120	129	1
5	165	105	107	1
6	150	90	95	1

Cliques

Cutoff: 0.85

Attach Close Stamps

Attach Percent: 95

Determine Cliques

K-Means Clusters

Nmb. Clusters: 6

Max Iterations: 10

Determine Clusters

Cluster	Width
1	
2	
3	
4	

View/Save Report

Add Color Match to Report

Closest Clique by Color: 8
Distance: 31

Closest Clique by Nmb Edges: 0
Number Edges: 0

Add Stamp To Clique: 1

(This Operation is Irreversible)

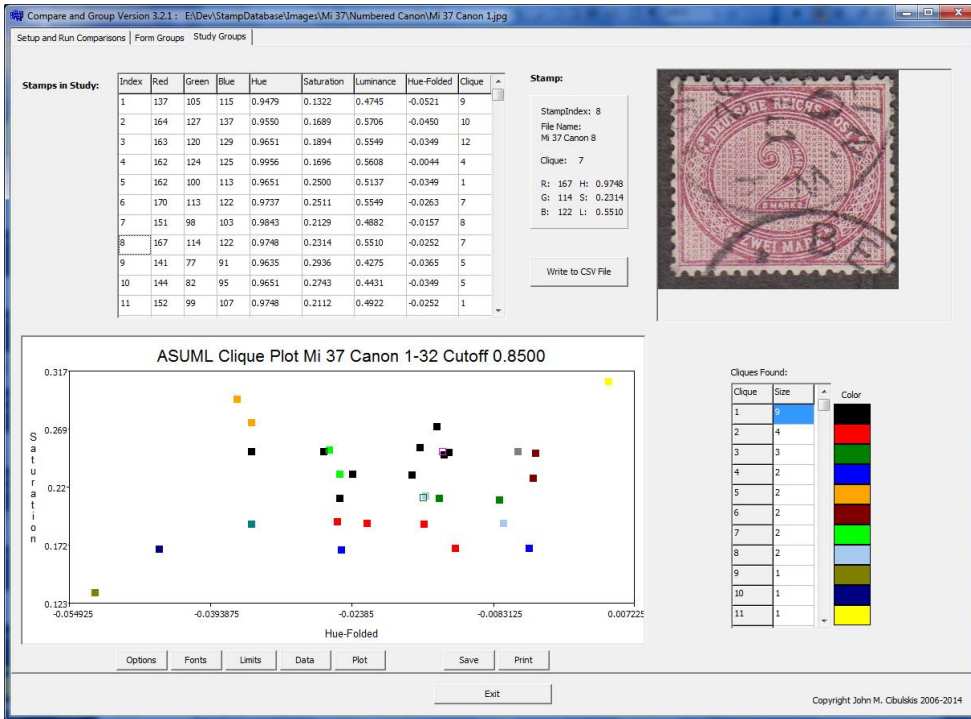
Order	Color	R	G	B	Distance
1	pale brown lilac	160	86	106	15
2	bright brown purple	162	102	117	24
3	bright violet brown	147	108	113	31
4	violet brown	129	91	99	38
5	brown purple	145	76	97	39
6	gray lilac	160	73	120	42
7	pale reddish brown	173	111	91	44
8	pale carmine brown	163	79	83	44
9	brownish lilac	171	69	99	46
10	pale brown	147	117	88	47

Order	Color	R	G	B	Distance
1	bright violet brown	147	108	113	15
2	blackish carmine gray	124	112	116	21
3	blackish red gray	121	112	117	25
4	blackish lilac gray	136	120	128	29
5	bright brown purple	162	102	117	30
6	bright brown violet	137	74	117	33
7	violet brown	129	91	99	38
8	dark red gray	136	127	132	40
9	bright gray brown	135	132	102	42
10	dark carmine gray	140	127	134	44

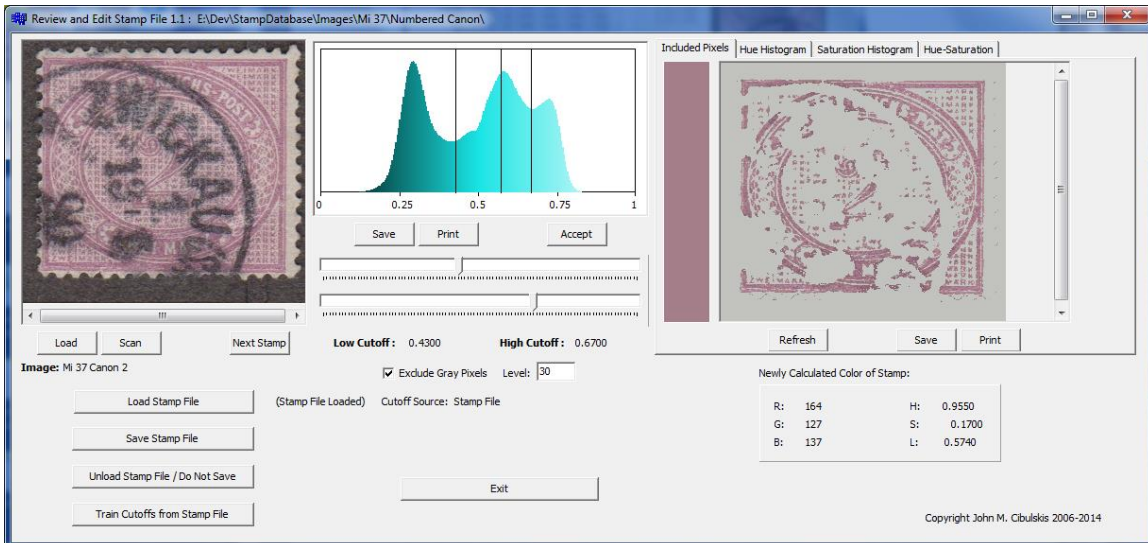
Color Language: English (checked) | Deutsch

Color Match Distance: TAXI (checked) | HSL | Euclid

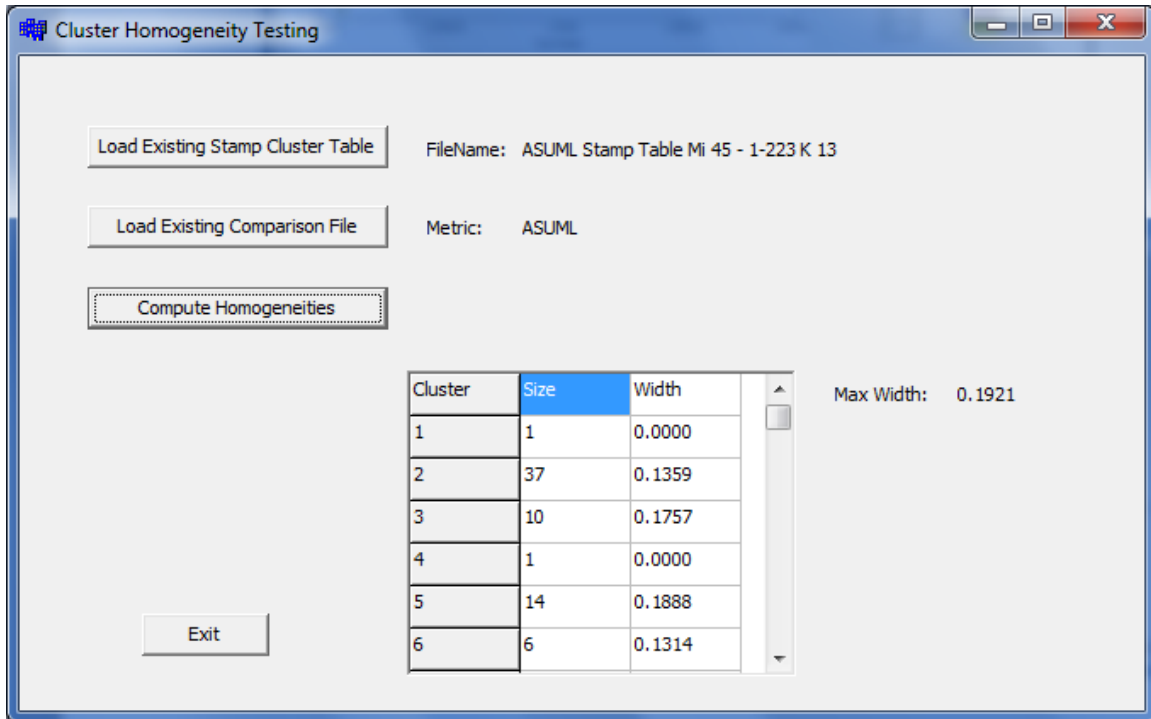
Copyright John M. Cibulskis 2006-2014



3. Review and Edit Stamp File:



4. Compute Homogeneities:



5. Split:

